

LIMOUSIN

The Ideal Complement to British Based Cows.

***Breed group means for carcass composition and muscle growth efficiency related traits.**

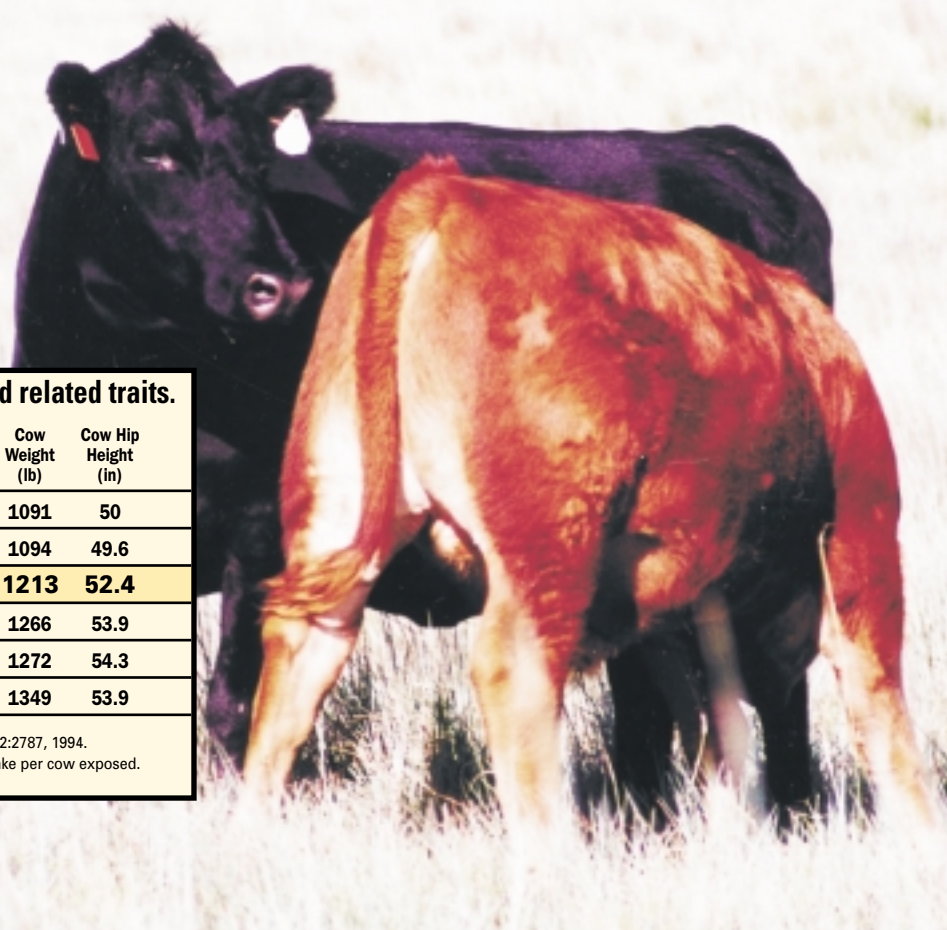
Breed	**Efficiency to 463 lbs. Retail Product	Carcass Weight	Dressing Percent	Fat Thickness	Ribeye Area	Percent Retail Product
Hereford	24	675	60.3	0.46	10.5	60.1
Angus	26	697	61.3	0.46	10.5	61.5
Limousin	57	728	63.4	0.17	13.4	72.3
Gelbvieh	49	750	59.9	0.14	13	70
Simmental	46	767	59.8	0.16	12.6	68.4
Charolais	50	767	60.7	0.14	12.5	68.7

*Technical Bulletin Number 1875, U.S. Meat Animal Research Center.
**Retail Product Production per Megacalories of Metabolizable Energy (Mcal/ME).

Maternal Efficiency: Limousin's Best Kept Secret!

- Low maintenance requirements and high efficiency over a wide range of available feed resources
- Leading major continental breed for calving ease along with moderate milk and mature size

50/50 LMxAN cow
75/25 LMxAN calf



***Breed group means for maternal efficiency and related traits.**

Breed	**Biological Efficiency at 3,500 DMI	Biological Efficiency at 7,000 DMI	Calf Birth Wt. (lb)	Calving Difficulty (%)	12-hour Milk Yield (lb)	Cow Weight (lb)	Cow Hip Height (in)
Hereford	30	13	79.4	16.5	6.7	1091	50
Angus	39	17	74.7	8.8	9.3	1094	49.6
Limousin	33	42	86.4	15.7	10.2	1213	52.4
Gelbvieh	29	36	95.2	21.5	12.7	1266	53.9
Simmental	26	42	94.2	23.9	13.1	1272	54.3
Charolais	27	45	98.1	19.5	10.5	1349	53.9

*Technical Bulletin Number 1875, U.S. Meat Animal Research Center and JAS 72:2787, 1994.
**DMI = dry matter intake. Grams of calf weaned per kilogram of dry matter intake per cow exposed.

Limousin Genetic Trends Tell the Story!

- Best adapted continental breed for the case-ready beef industry
- High weaning and yearling muscle growth with moderate birth weight
- Documented genetic merit in docility, scrotal circumference, milk and stayability
- Comprehensive predictions for carcass merit

