

Greetings, juniors

Welcome to the summer 2010 edition of *NALJA News*. I hope you are looking forward to the summer show season.

In this issue, you will find important information about the three regional shows and the National Junior Limousin Show and Congress (NJLSC). Please pay close attention to **all** entry deadlines, dates, locations, schedules, hotel information and activities. Make sure you read and understand all the rules that govern the shows and meet all eligibility requirements. If you have any questions whatsoever, contact the North American Limousin Foundation (NALF) office or me.

Make sure **all** tattoos are correct **and** readable before coming to the shows.

As always, I look forward to the regional shows and getting to spend time with you and your families as we gear up for the summer's big event – the NJLSC. The Kansas folks are hard at work preparing for all of us to be in Hutchinson July 3–9 for "Fireworks on the Frontier." As always, it promises to be enjoyable, educational and the highlight of our summer as we gather for our 2010 Limousin "family reunion." I get excited thinking about every aspect and event of the week and look forward to spending it with each of you and your families.

Good luck with all of your activities. I know you all are busy with many things, and that makes me proud of you. Remember, your NALJA Board of Directors and advisors are here to serve you. Let us know if we can be of assistance in any way.

Have safe travels, and may God bless you, your families and the Limousin breed.

— **Bret Begert**

Director of Junior Activities

NALJA News is published semiannually by the
North American Limousin Foundation
7383 S. Alton Way, Suite 100, Centennial, CO 80112

(303) 220-1693 • fax: (303) 220-1884
Web: www.nalf.org • e-mail: limousin@nalf.org

NALJA Advisors

Bret Begert
bret@nalf.org
(806) 375-2308

Kate Maher
kate@nalf.org
(303) 220-1693, Ext. 106



Dear NALJA members

It is almost summertime! Almost time to start heading out to the barn after school and spend your weekend mornings, not in bed, but in the wash rack. Feeling like all you want to do is go to bed, but if your parents walk in one more time and you still aren't dressed, the day is going to be 10 times worse.

The days between now and the National Junior Limousin Show and Congress (NJLSC) seem to drag by. After Christmas, it's as if you are on the other side of the mountain, heading downhill, and it is getting closer and closer. But the things you anticipate the most take the longest to come around. We all have activities to keep us occupied until then. Like baseball, softball, track and, of course, schoolwork. I know you can see the light at the end of the tunnel, but keep up your good work. It will pay off, and studying throughout the semester will make it easier for all the tests in the end. For all of you seniors, just a few more weeks and you are **done** with high school. I know there is still college; but college, trust me, is completely different.

I just want to thank the Kansas team in advance for this year's NJLSC. I already can tell it is going to be an amazing show. I mean, you don't start a bad show with fireworks, do you? Definitely not. I really am looking forward to seeing everyone again and letting everyone know how thankful we are for the love and support of the breed. I can't wait!

— **Shayla Carmichael**

2009–2010 NALJA President



No changes to late-entry rules, bedding fees

Entry fees for this year's National Junior Limousin Show and Congress (NJLSC) will remain at \$30 per animal entered by May 15. Late-entry fees will be **\$60** per animal entered after May 15. Remember, the NJLSC will **not** accept entries after **June 10**.

Bedding fees again will be \$25 per animal, which includes first bedding in the barns and bedding in the tie-outs. Additional bedding will be available for purchase later in the week if needed. Show organizers encourage exhibitors to bring additional straw for tie-out bedding.

Judges selected for Hutchinson

NALJA has confirmed John Rayfield of College Station, Texas, will judge the owned-female show at this year's NJLSC. Jered Shipman of Lockney, Texas, will evaluate the steer, bred-and-owned and Lim-Flex® entries. Stacey Fisher and Jeff Stump of Great Bend, Kan., will officiate the showmanship contests.

18TH ANNUAL LIMOUSIN BEEF COOK-OFF!



MONDAY, JULY 5 – 11 A.M.

Divisions:

There will be one division for juniors and one for adults.

Registration:

Each Cook-Off team must submit its roster and a typed copy of its recipe **by May 15** to Kate Maher in the NALF office.

For additional information, including the complete Limousin Beef Cook-Off rules, contact Mary Booth at smbooth@dishmail.net or (918) 542-1587.

Limi Boosters Limousin Beef Cook-Off Entry Form

Team name _____

Team members' names _____

Contact person(s) _____

Street address _____

City, state & ZIP code _____

Phone number _____

E-mail address _____



2010 National Junior Limousin Show and Congress

Tentative Schedule of Events

Saturday, July 3

- 8 a.m. Cattle may begin arriving
- 4 p.m. NALJA Board of Directors interviews, Grand Prairie Hotel

Sunday, July 4

- 7 a.m. NALJA Board meeting, Grand Prairie Hotel
- 9 a.m. Cattle check-in
- 3 p.m. State advisors and officers meeting
- 4 p.m. Tenderfoot social
- 7 p.m. Opening ceremonies, with fireworks and dance to follow

Monday, July 5

- 8 a.m. Public-speaking contest
- 11 a.m. Limi Boosters Limousin Beef Cook-Off
- 1 p.m. NALJA Annual Membership Meeting
- 2:30 p.m. Cow Camp preliminaries

Tuesday, July 6

- 8 a.m. Steer, bred-and-owned, and Lim-Flex® shows

Wednesday, July 7

- 8 a.m. Owned-female show, with junior and intermediate showmanship finals to follow

Thursday, July 8

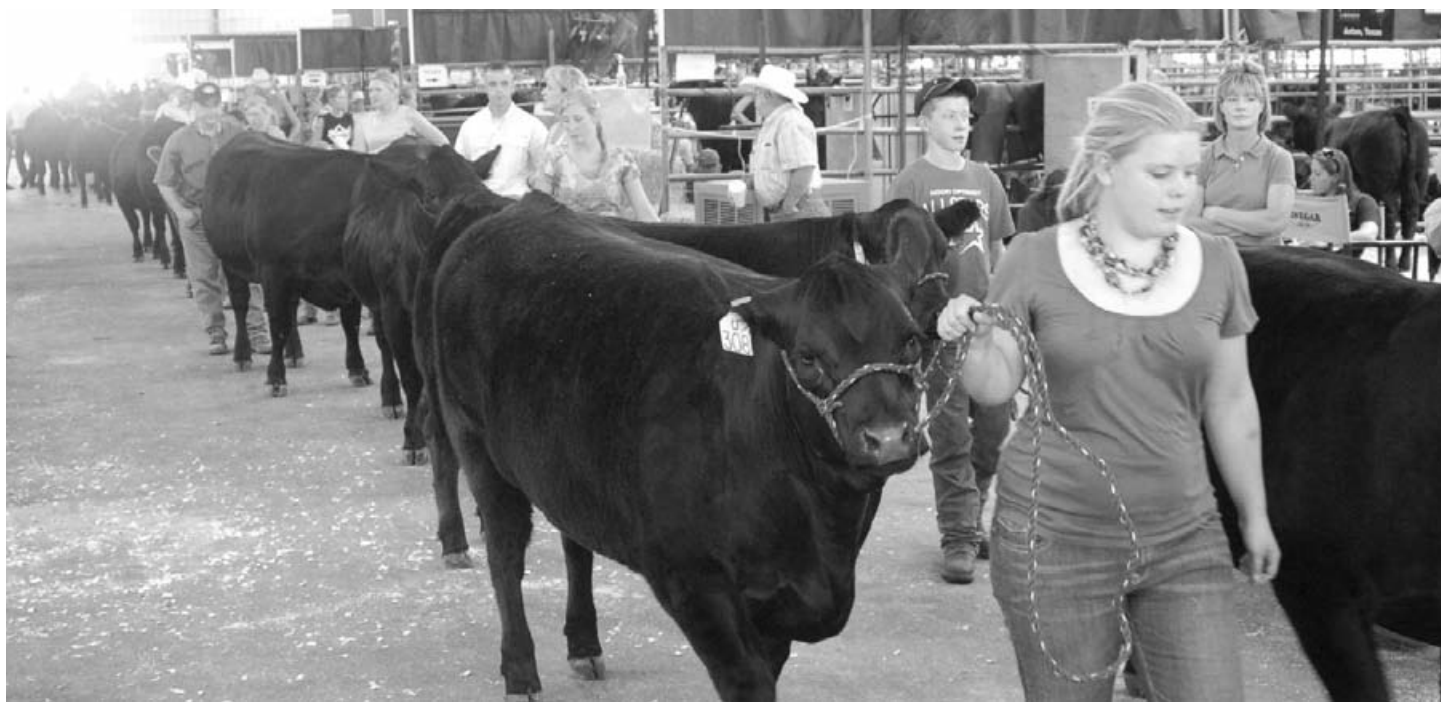
- 8 a.m. Senior showmanship finals
- 10:30 a.m. Judging contest
- 3 p.m. Cow Camp finals

Friday, July 9

- 8 a.m. All-American Limousin Futurity
- 2 p.m. NALJA presidential election, with NALJA Board meeting to follow
- 7 p.m. NALJA awards banquet, with dance to follow, Grand Prairie Hotel

All activities are at the Kansas State Fairgrounds unless otherwise noted.

Look for daily schedules in the barns and at the headquarters hotel.





ACS has AALF entry forms

The All-American Limousin Futurity (AALF) will be Friday, July 9. To enter the AALF purebred, Lim-Flex® or full-blood shows, contact American Cattle Services (ACS) at acs@americancattleservices.com or (580) 597-3006. Or visit www.americancattleservices.com on the Web and click "Upcoming Sales."

Remember, juniors, entry in the National Junior Limousin Show and Congress (NJLSC) does *not* automatically enter you in any of the AALF shows.

Before you pack ...

Here are some useful Web sites as you plan your trip to Hutchinson, Kan., for the 2010 NJLSC.

www.kansasstatefair.com

www.grandprairiehotel.com

www.hutchchamber.com

www.visithutch.com

Do you have a reservation?

The headquarters hotel for the "Fireworks on the Frontier" 2010 NJLSC is the Grand Prairie Hotel and Convention Center in Hutchinson, Kan. Rooms are \$80 per night, plus tax, and you can make reservations by calling 1-800-362-5018. Be sure to ask for the "North American Limousin Foundation" block. Make your reservations right away.

Two other hotels are close to the Kansas State Fairgrounds. They are the Comfort Inn, (620) 663-7822, and the Days Inn, (620) 665-3700. Call them directly for room rates and availability.

Recreational-vehicle (RV) hookups are available at the fairgrounds. With 211 spaces available, there is plenty of room. Full hookups are \$20 per night and include water, sewage and electricity. Call the fairgrounds directly at (620) 669-3600 to reserve a spot.

Visit NALJA's home on the Web

Click the "Juniors" button on www.nalf.org

- Complete the NALJA member survey
- Learn about and apply for the NALJA Board, grants, scholarships and awards
- Find the 2010 NJLSC schedule
- Share the NALJA membership application with your friends and neighbors
- Download brochures about selecting, feeding and raising quality Limousin cattle
- Much more ...

Don't have Internet access?
Call the NALF office, (303) 220-1693,
and request hard copies of the information.

Fullblood Limousin Alliance to offer premiums

The Fullblood Limousin Alliance will be offering premium monies to juniors who exhibit fullblood animals during this year's NJLSC. The group will award \$300 to each junior exhibitor who shows a fullblood animal. Contact Andy McCutcheon at (501) 428-3077 for more information.



Event Information

Individual Sweepstakes Points

A) Exhibiting Animals

- 100 points per animal shown (300 points maximum).
- Exhibitors showing animals in the owned-female show, bred-and-owned show and steer show will receive points for placing in the class according to the following schedule:

1st 30 points	4th 15 points
2nd 25 points	5th 10 points
3rd 20 points	

- 100 bonus points will go to all cattle exhibitors who meet the May 15 early-entry deadline with no errors, have all registrations and transfers completed, and have preregistered for all of the satellite events in which they plan to participate. North American Limousin Junior Association (NALJA) members who are not exhibiting cattle but are participating in satellite events also can earn the bonus points if they preregister by May 15.

B) Showmanship

Exhibitors who qualify for and show their own animals in the showmanship finals will receive 50 points. The champion in each division receives an additional 25 points.

C) Satellite Events

- NALJA members must compete in the same age division across all contests (that is, you cannot be considered a novice in one event and a junior in another), except showmanship, where past champions may move up.

Novice: younger than 13 and never competed in national satellite events; will not compete for overall sweepstakes awards.

Junior: 13 years of age and younger

Intermediate: 14–16 years of age

Senior: 17–21 years of age

Ages will be the individual's age as of Jan. 1, 2010.

- Public Speaking, Photography, Judging and Magazine-Ad Contests
 - Each contestant will receive 100 points for participation in each event.
 - Points will be awarded in each age division according to the following schedule:

1st 100 points	4th 50 points
2nd 80 points	5th 40 points
3rd 60 points	
- At the conclusion of the National Junior Limousin Show and Congress (NJLSC), sweepstakes participants may request their scores and copies of their score sheets for each event in which they participated. Participants may request only their own scores. NALJA will not release other participants' scores.

- NALJA will use the following criteria to break any ties within the top 10 sweepstakes finalists: (a) who participated in more satellite events; (b) who exhibited more animals; and (c) who placed higher in their satellite events.

State Sweepstakes Points

Base points will go to each state by dividing the total number of points awarded to exhibitors from a state by the number of exhibitors from the state.

A) Herdsmanship

- 100 points will go to each division winner.
- Two divisions, small states and large states, will be determined at the show by the number of cattle exhibited per state.

B) Best State Group of Females, Limousin Beef Cook-Off, Cow Camp, State Posters

- Each participating state will receive 100 points.
- Additional points will go to the following placings:

1st 100 points	2nd 75 points
---------------------------------	--------------------------------

C) Public-Speaking, Judging and Magazine-Ad Contests

- Each state may have as many teams as desired, but each participating state will receive only 100 participation points.
- Points will go to the highest-placing team from each state in each age division according to the following schedule:

1st 100 points	4th 50 points
2nd 80 points	5th 40 points
3rd 60 points	

D) Combined State Teams

NALJA will prorate participation and placing points for combined state teams. Regardless of age divisions, the maximum participation points possible are 100 points per state per event.

Showmanship Contest

A) Time

The showmanship judges will choose at least 10 finalists in each division during the shows Tuesday, July 6, and Wednesday, July 7. The junior and intermediate showmanship finals will follow the owned-female show, Wednesday, July 7. The senior showmanship finals will be Thursday, July 8, starting at 8 a.m.

B) Registration

All cattle exhibitors automatically enter the showmanship contest.

C) Divisions

Junior (13 years of age and younger), intermediate (14–16 years of age) and senior (17–21 years of age).



Event Information

D) Rules

1. The showmanship judges will select the finalists in each division during the show.
2. The junior and intermediate division finalists will be announced throughout the owned-female show and will return to compete for champion of the junior and intermediate divisions following that show July 7.
3. The senior finalists will be announced after the owned-female show and will compete Thursday, July 8. They will have 30 minutes to fit their own animals, which will be wet down before the contest. After fitting the animals, the contestants will show them.
4. Individuals who have won a division no longer are eligible to compete in that division. Past junior and intermediate showmanship winners may advance to an older division.
5. Finalists **must** show their own animals.

State Herdsmanship

A) Time

The herdsmanship judging begins Monday, July 5, at 8 a.m. and continues through noon Friday, July 9.

B) Divisions

After check-in, NALJA will assign the states to one of two categories (large or small) based on the number of cattle each state enters.

C) Rules

1. States will be judged throughout the aforementioned period.
2. Judging for state herdsmanship will be based on the following criteria:
 - a) General neatness and tidiness of each exhibitor's area within each state's area.

- b) How well the state maintains its alley.
 - c) How well all exhibitors from a state maintain their cattle.
 - d) Creativity of aisle theme and décor.
3. State booths are **not** allowed. NALJA will disqualify any state displaying a booth from the herdsmanship competition.
 4. Any state that violates the official show rules or barn rules will be disqualified.

D) Premiums

1. Cash prizes will go to the winning states' treasuries.
2. Points will go to each division winner and will count toward the final point total for the state sweepstakes award.

Photo Competition

A) Time

Competitors must deliver their entries to the show office by 8 a.m. Monday, July 5. NALJA members not attending the show may submit their entries to the North American Limousin Foundation (NALF) office no later than **June 15**.

B) Divisions

Novice, junior, intermediate, senior and adult.

C) Rules

1. Photos may be black and white or color. They must be **8 by 10 inches**. All entries must be mounted on **11-by-14-inch** foam board; no matting or framing allowed. The judge will not consider any entries that do not conform to the required dimensions. The exhibitor's name, address and satellite-event age division must be on the back of the entry.
2. Photos cannot be altered or digitally enhanced in any way.
3. One entry per contestant.
4. Photos become the property of NALJA. By entering, participants agree that NALJA and NALF may use the photos in publications and promotions.
5. NALJA or NALF may ask competitors to provide a negative or original digital file for duplication.
6. The photo contest will count toward sweepstakes points and standings. NALJA will award prizes.
7. A \$5 entry fee must accompany adult entries. (Entrants must put "adult division" on the back of their entries.)



Limousin Cow Camp

A) Time

Preliminaries – Monday, July 5, at 2:30 p.m.
Finals – Thursday, July 8, at 3 p.m.

B) Divisions

Junior (13 years of age and younger), intermediate (14 years of age through 16 years of age) and senior (17 years of age through 21 years of age).

C) Registration

A team will consist of three or four individuals.

D) Premiums

Cash premiums will be awarded to the state treasuries of the winning team in each division.

E) Rules

1. Contest will **not** count in sweepstakes competition.
2. Juniors will have a chance to test their ability in a number of production areas. This may include artificially inseminating a reproductive tract; weighing and vaccinating a newborn calf; conducting a breeding soundness exam; identifying breeding and calving equipment; planning artificial-insemination (AI) matings, etc. As well, participants will be asked to answer production questions.
3. Stations will be set up with a time limit for each station. Each team will perform certain tasks at the station and be scored accordingly.
4. The top two teams in each division after the preliminary round will advance to the finals Thursday, July 8, at 3 p.m.

Public Speaking Contest

A) Time

Monday, July 5, at 8 a.m.

B) Divisions

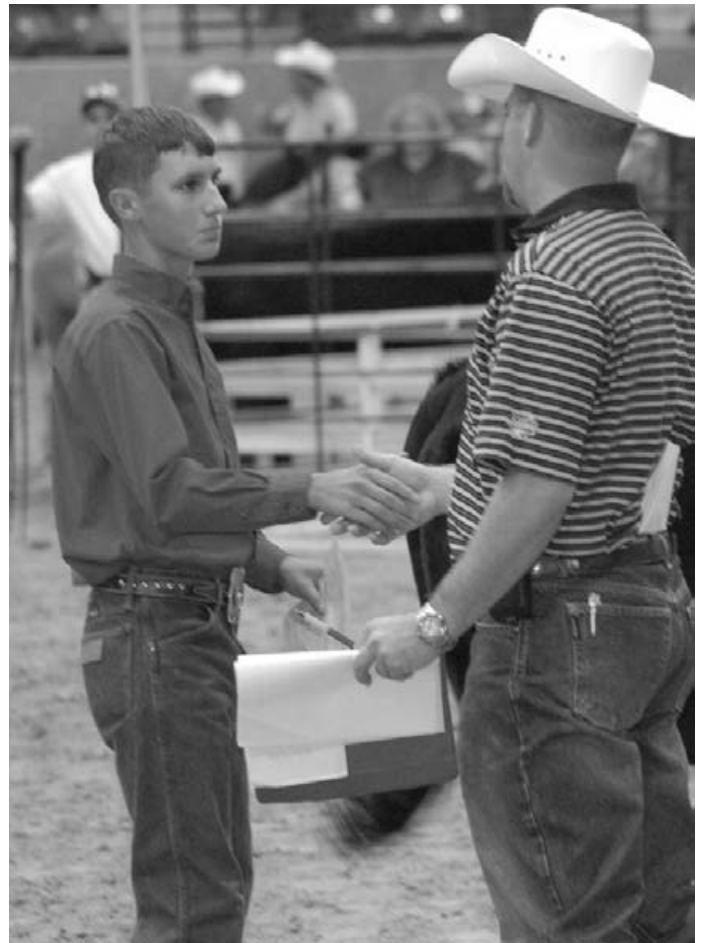
Novice (13 and younger and never has participated in any of the satellite events on a national level), junior (13 and younger), intermediate (14–16) and senior (17–21).

C) Registration

All contestants must preregister by May 15. See entry form for more details.

D) Rules

1. At the time of the contest, each contestant must turn in three cards with the contestant's name and the topic of the speech.
2. Speeches must pertain to the beef industry. Visual aids are limited to physical charts, etc. No slides, overheads or any other electrical aids will be allowed.
3. Contestants will be evaluated on content, presentation, creativity and answers to questions.
4. Time limits are as follows:
Novice and Junior – not to exceed 5 minutes.



Intermediate – 5 to 7 minutes.

Senior – 7 to 10 minutes.

E) Premiums

Premiums will be awarded in each division.

Judging Contest

A) Time

10:30 a.m., Thursday, July 8

B) Registration

10 a.m., Thursday, July 8

C) Divisions

Novice, junior, intermediate and senior. There also will be an adult division.

D) Rules

1. A team shall consist of three or four individuals, with the top three scores making up the team. No individual may be on more than one team.
2. There will be six cattle classes; contestants will have 12 minutes to evaluate each class. All classes will have complete performance data available and a given scenario. There will be no written or oral reasons on any class; however, question classes will be designated.
3. While the contest is in progress, there will be no talking among contestants. Contestants may not talk to anyone else except the group leader. Violation will result in disqualification.



Event Information

State Poster Contest

A) Time

Each state must deliver its entry to the show office by 8 a.m. Monday, July 5. States without members attending the show may submit their entries to the NALF office no later than **June 15**. NALJA will display the posters throughout the NJLSC.

B) Divisions

All states will compete in the same division.

C) Rules

1. Each state may submit one poster. The poster must be 24 by 36 inches. Posters must be mounted on tagboard or foam board. The state's name and contact information for a state representative must be printed on the back of the poster.
2. Each poster should promote or highlight the state's junior association and programs. Computer-generated graphics, designs and fonts are not allowed on the poster. Pictures, magazine clippings, breed advertising, stencils and adhesive letters may be used. The poster must be two-dimensional. NALJA will disqualify any poster that contains three-dimensional items.
3. One entry per state.
4. Posters become the property of NALJA. By entering, states agree that NALJA and NALF may use the poster for any publication or promotion.

5. The poster contest will count toward state sweepstakes points.

Magazine-Advertisement Contest

A) Time

Competitors must deliver their entries to the show office by 8 a.m. Monday, July 5. NALJA members not attending the show still may compete by completing the entry form and must submit their entries to the NALF office no later than **June 15**. NALJA will display the advertisements throughout the NJLSC.

B) Divisions

Novice, junior, intermediate and senior.

C) Rules

1. Each contestant is to design a magazine advertisement that meets the topic specified for the current year's contest. The advertisement can be no larger than 8.5 by 11 inches. Exhibitors must print their names, addresses and satellite-event age divisions on the backs of their entries.
2. Magazine advertisements should be computer-generated, and contestants may use any pictures, graphics, designs or fonts. Contestants should laminate their advertisements or cover them with clear contact paper.
3. One entry per contestant.
4. Topics for the contest follow.
 - a) The 2010 topic for the magazine-advertisement contest for the novice and junior divisions is "Advertise the 2010 NJLSC."



- b) The 2010 topic for the magazine-advertisement contest for the intermediate division is "Advertise for your own production sale."
 - c) The 2010 topic for the magazine-advertisement contest for the senior division is "Promote the profitability of Limousin carcass traits."
5. Advertisements become the property of NALJA. By entering, individuals agree that NALJA and NALF may use the advertisement for any publication or promotion.
 6. The magazine-advertisement contest will count toward individual and state sweepstakes points.



Show Rules

1. Sponsor and Eligibility.

The North American Limousin Junior Association (NALJA) sponsors the regional and national junior shows, and they are open to all NALJA members. No one who was 22 years or older on Jan. 1, 2010, is eligible to show.

NALJA members must be in good standing to enter the regional and national junior shows. That is, they must be current with their junior activity fees (NALJA dues), and their North American Limousin Foundation (NALF) accounts cannot be more than 120 days past due.

Anyone who wishes to participate in a regional or national Limousin junior show must be a NALJA member when submitting entries.

2. Animal Qualifications.

Females with 75 percent or greater Limousin blood and orange NALF registration papers born from Sept. 1, 2008, to Dec. 31, 2009, (inclusive) will be eligible to compete. Orange-papered, 75 percent females are not eligible for the Lim-Flex® show.

All bulls entered must be bred-and-owned. Bulls registered as Lim-Flex (that is, having purple NALF registration certificates) born from Jan. 1 to Dec. 31, 2009, (inclusive) will be eligible to compete in the Lim-Flex bred-and-owned bull show. Bulls with 75 percent or greater Limousin blood and orange NALF registration certificates born from Jan. 1 to Dec. 31, 2009, (inclusive) will be eligible to compete in the bred-and-owned Limousin bull show.

Females registered as Lim-Flex (that is, having purple NALF registration certificates) born from Sept. 1, 2008, to Dec. 31, 2009, (inclusive) will be eligible to compete. Lim-Flex females that are 75 percent Limousin are not eligible for the Limousin female shows.

A cow born on or before Aug. 31, 2008, with a natural calf at side is eligible to show in the Cow-Calf Division. The cow's percent Limousin will determine in which show the pair is eligible to compete. Cows with 75 percent or greater Limousin blood and orange registration papers will show in the purebred shows. Cows registered as Lim-Flex (that is, having purple registration papers) will show in the Lim-Flex show. Calves shown beside their dams will be eligible to show as individuals if they meet the following requirements:

- A female calf shown beside her dam is eligible to show as an individual if her percent Limousin is not the same as her dam's and she otherwise would qualify to show in a show other than where she competes as part of a cow-calf pair. For example, a Lim-Flex calf that shows beside

a purebred cow may show as an individual in the Lim-Flex female show, and a purebred calf that shows beside a Lim-Flex cow may show as an individual in the purebred shows.

- A bull calf shown beside his dam in the Lim-Flex show is eligible to show as an individual in the bull show if he is bred-and-owned and 75 percent or greater Limousin.

The term "animal" used throughout these rules refers to bulls, steers and females alike.

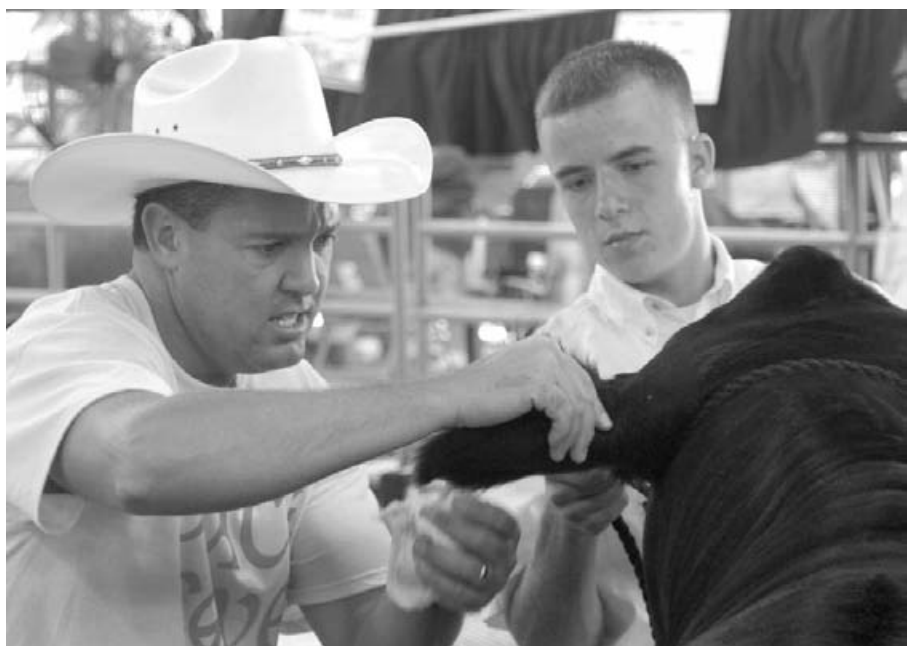
It is the exhibitors' responsibility to ensure their animals qualify for the shows they enter. NALJA will not give refunds for unqualified animals entered in any show.

3. Entries.

Junior exhibitors must register their animals in their own names, with certificates dated on or before the date of entry. Exhibitors must submit entries to the NALF office on official entry forms, bearing official postmarks of no later than May 15, 2010, to qualify for the \$30 per head entry fee. Entries postmarked after May 15, 2010, are subject to an entry fee of \$60 per head. NALJA will accept late entries with official postmarks on or before June 10, 2010; but it will not accept any entries postmarked after that date.

NALJA will not refund entry or bedding fees. Exhibitors must pay their junior activity fees (NALJA dues) before they may enter the national or regional Limousin junior shows.

To ensure NALF can process all registrations and transfers in time for animals to enter the NJLSC, juniors should submit registration and transfer requests to the NALF office no later than May 5, 2010. That is particularly important for transfers. A letter should accompany those applications for registration or transfer stating they are for the NJLSC. NALF is not responsible for misinformation on any entries. It is the exhibitor's responsibility to complete the entry form correctly.





Show Rules

4. Possession.

Exhibitors must maintain full possession and personally care for, prepare and show their entries from the date of entry through the NJLSC (6 p.m., Friday, July 9, 2010).

Any female transferred – within one year of the show in which the animal competes – from the junior exhibitor's name to the breeder or owner who transferred the animal to the junior exhibitor before the show will relinquish any accumulated and further Medal of Excellence (MOE) points.

5. Entry Limit.

There is no limit on how many animals an exhibitor may enter and show.

6. Classes.

Show officials will determine classes after check-in. They will make every effort to ensure no class contains more than 15 head or has an age spread of more than 60 days. All classes will line up according to age in the show arena.

At the NJLSC, there will be a class for the best pair of females owned and exhibited by one junior member. Both



females must show in the regular show. In the NJLSC “best state group” class, each state junior association will select three females (each exhibited by a different junior) to represent it; and that class will count toward sweepstakes points.

7. Bred-and-Owned.

To show in the bred-and-owned show, the female's or bull's tattoo must include the junior exhibitor's herd prefix; and the female's or bull's dam must have been registered to the junior exhibitor at the time the dam was bred to produce the animal. Embryo-transfer (ET) calves are eligible for the bred-and-owned show; however, the donor female must have been registered to the junior exhibitor at the time she was flushed to produce the animal.

The family's prefix in the female's or bull's tattoo or family ownership of the dam at breeding does *not* qualify for the bred-and-owned show. No animals from partnership or lease-agreement cows qualify. NALJA automatically enters eligible animals from the owned-female show in the bred-and-owned show.

Juniors may sell no more than 50 percent ownership of a bred-and-owned bull and still be eligible to compete with him in the bred-and-owned bull show. The exhibitor must keep full possession of that bull until the regional and national shows conclude. All other bred-and-owned rules apply.

8. Fitting.

To maintain a high degree of confidence in Limousin junior shows, NALJA reserves the right to disqualify any animal for unethical fitting, which shall include the following.

- Any use of paints, hair coloring, conditioners, colored show foam, graphite, colored powders or other substances that may be subject to disqualification. All animals are subject to a “white towel” test from check-in to release. NALJA reserves the right to collect hair samples from any animal at any show.
- The addition of any hair or hairlike substances, including false tail heads and false polls. (NALJA allows false tail switches.)
- The cutting, tearing or gluing of the hide or underneath the hide or removal of tissue in an attempt to alter the animal's shape.
- The injection of any gas, solid or liquid under the hide to alter the animal's conformation.
- Any attempts to disrupt or change the animal's normal dental development.
- Any products, such as steroids or growth stimulants, administered internally or externally to alter the animal's conformation.
- Any pumping without authorization from a licensed veterinarian.

9. Substitute Showmen.

All junior exhibitors are required to show their own animals. In the case of sickness or injury after arrival at the show, exhibitors (who must be present at the show) may

select another junior exhibitor to show their animals. The NALF director of junior activities and the president of the NALJA Board of Directors must approve substitute showmen before they enter the showing.

Exhibitors with more than one animal in a class may have (an)other NALJA member(s) show the additional animal(s) without approval.

10. Check-In.

All cattle entered in the NJLSC must be in the stalls by 8 a.m., Sunday, July 4, 2010. Show officials will check tattoos and health papers at that time. ***They will disqualify animals with illegible or incorrect tattoos.*** Once an animal has been through check-in and disqualified due to an illegible or a wrong tattoo, that animal may not go through check-in again with a new or fresh tattoo. Show officials will weigh steers and bulls and measure scrotal circumferences at check-in.

11. Stalling.

Show officials will assign stalls to exhibitors at the NJLSC according to their current addresses on file at NALF. Failure to stall in assigned spaces from noon Sunday, July 4, 2010, through 2 p.m. Friday, July 9, 2010, will result in a forfeiture of all premiums and show awards and elimination from the state herdsmanship competition.

Exhibitors must obtain permission for early releases by submitting written requests and providing proof of need to the NALF office before the show.

NALJA only allows the stall cards provided at the show in the junior aisles. NALJA prohibits farm signs and aisle fans.

12. Entry Numbers.

All exhibitors must display clearly their entry numbers while they are in the makeup area and showing.

13. Disposition.

To ensure safety, animals with unruly dispositions will not show. The judge or show officials may dismiss exhibitors with unruly animals from the show.

14. Health Requirements.

Health certificates must comply with local rules and regulations for cattle. No animals with hereditary unsoundness may show.

15. Steers.

Steers must be registered halfblood or greater percentage Limousin to compete. Steers must have registered Limousin sires or dams. Exhibitors must present registration certificates at check-in. Show officials will check the steers' tattoos to ensure they are legible and match the registration papers. Exhibitors may not enter a bull in the bull show then castrate him for the steer show.

Show officials will break classes and divisions by weight. The judge also will have hip heights available. The steer show will include prospect and progress divisions. Prospect steers are those weighing less than 900 pounds at check-in, while steers weighing more than 900 pounds will be in the progress division.

NALJA will release exhibitors showing only steers immediately following the steer show. All other rules for the female and bull shows also apply to the steer show.

16. Misrepresentation.

Any person found misrepresenting the NALJA rules and regulations will forfeit all premiums and show awards and may be subject to disqualification.

17. Substitute Animals.

NALJA does not allow substitutions for any animals.

18. Agreement of Responsibility and Liability.

Participants must maintain full control, custody, care and feeding of the animals and personal property that they bring on or about the premises of the national and regional junior Limousin shows. Participants clearly understand and agree that NALJA – along with NALF and its officials, officers, directors, employees and agents – shall not be responsible for any damage, loss or injury to any person or property that is caused directly or indirectly for any reason at those shows. The exhibitors, owners, their agents and representatives agree to indemnify NALJA and NALF and hold the organizations harmless for all damages, injuries, losses, expenses or liabilities they might incur at those shows, including any that may result from NALJA or NALF enforcing its rules and regulations. By entering the national or regional junior Limousin shows, the participants and their parents or guardians agree to the terms described in this section and agree to comply with all the rules and regulations governing those shows.



Be sure to talk to your state advisor, a NALJA Board member, a NALF staff member or a Limi Boosters officer about taking advantage of the many opportunities available to NALJA members:

- Leonard & Vi Wulf Scholarship
- NALJA Awards of Excellence
- NALJA Board of Directors
- Limi Boosters scholarships & educational grants
- Limi Boosters junior-association grants

All applications are due **MAY 15**.

National Junior Limousin Show & Congress Entry Form

Send all entries to North American Limousin Foundation, Attn: Kate Maher, 7383 S. Alton Way, Suite 100, Centennial, CO 80112

Entry Deadline: May 15, 2010

Name _____ NALJA Member # _____
 Address _____ Age as of 1/1/2010 _____ Date of Birth _____
 City/State/ZIP _____ Phone _____
 Parent's Name _____
 E-mail Address _____
 Hometown Newspaper — Name & E-mail Address _____

Adult Shirt Size S M L XL

Entry Fee: \$30/animal Bedding Fee: \$25/animal

Entry Fee after May 15: \$60/animal

ABSOLUTELY NO REFUNDS or SUBSTITUTIONS

NO ENTRIES ACCEPTED AFTER JUNE 10, 2010

NALJA Awards Banquet

Grand Prairie Hotel, Friday, July 9, 2010

# of Tickets – Ages 13 and up: _____ @ \$20 each	Total – \$
# of Tickets – Ages 5-12: _____ @ \$10 each	Total – \$
# of Tickets – Under 5: _____ FREE	
TOTAL AMOUNT DUE FOR AWARDS BANQUET:	\$

Please reserve tickets now.
 Tickets can be purchased until 9 a.m. Wednesday, July 7, 2010.
Absolutely no tickets will be sold at the door.

Satellite Event Registration

\$10 entry fee (per participant, **not per event**) must accompany event registration

Sign me up for the following events (please check):

- Judging Contest Public Speaking
 Photo Contest Magazine Ad Contest

I will be participating in the following division:

- Novice Junior Intermediate Senior

**All ages are based on the participant's age as of Jan. 1, 2010.*

Remember, to receive bonus sweepstakes points, you must sign up for satellite events before the entry deadline - May 15, 2010.

Credit Card Payment

- MasterCard VISA

Name on Card _____

Card # _____ Exp. _____

Signature _____

STEER ENTRY FORM

Birthdate	% Limousin	Herd Prefix & Tattoo	Registration Number

Refer to Show Rules for animal qualifications. If you need more entry space, please make a copy of the entry form.

FEMALE/BULL ENTRY FORM

Birthdate	Sex	Herd Prefix & Tattoo (required)	Registration #	Animal's Name	Bred-&Owned

Refer to Show Rules for animal qualifications. (Note: Bulls **must** be bred-and-owned.) If you need more entry space, please make a copy of the entry form.

COW-CALF ENTRY FORM

Birthdate	Herd Prefix & Tattoo (required)	Registration #	Bred-&Owned
Cow			Cow Name: _____
Calf		Sex: _____	Sire Name: _____
Cow			Cow Name: _____
Calf		Sex: _____	Sire Name: _____

Refer to Show Rules for animal qualifications. If you need more entry space, please make a copy of the entry form.

LIM-FLEX FEMALE/BULL ENTRY FORM

Birthdate	Sex	Herd Prefix & Tattoo (required)	Registration #	Animal's Name	Bred-&Owned

Refer to Show Rules for animal qualifications. (Note: Bulls **must** be bred-and-owned.) If you need more entry space, please make a copy of the entry form.

I verify that I have read the rules and regulations related to participation and exhibition in the National Junior Limousin Show & Congress and agree to adhere to all rules and regulations accordingly. (Must be signed by both exhibitor and parent/advisor to validate entry.)

Exhibitor's Signature: _____

Date: _____

Parent's/Advisor's Signature: _____

Regional Limousin Excitement!

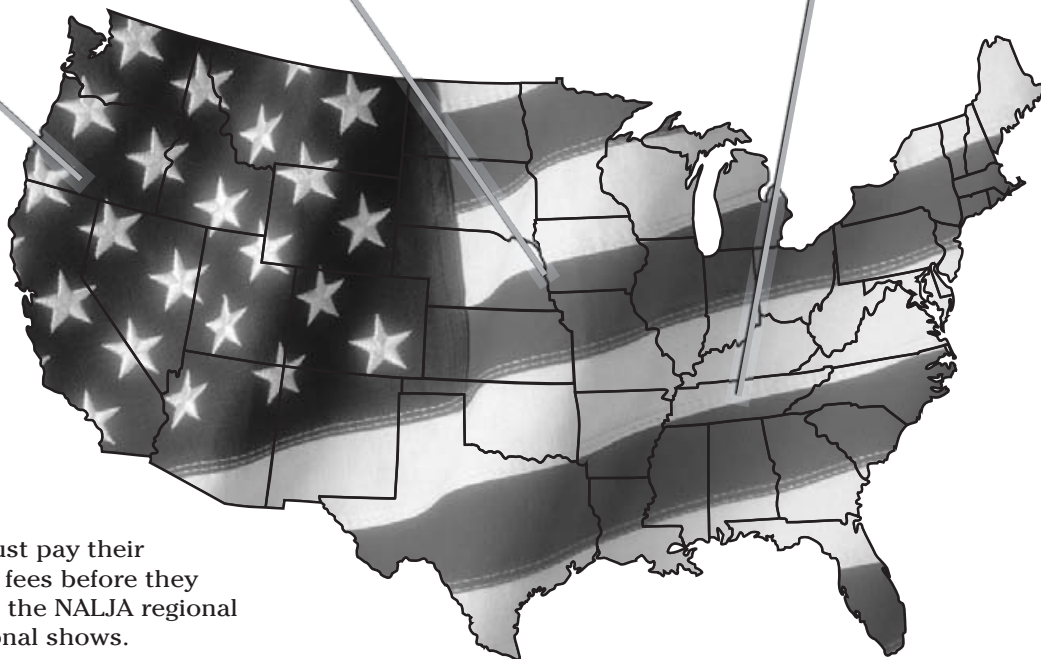
**WESTERN
LIMOUSIN EXPOSITION
KLAMATH FALLS, OREGON
JUNE 17-19**

**HEARTLAND REGIONAL
JUNIOR LIMOUSIN SHOW
COUNCIL BLUFFS, IOWA
JUNE 4-5**

**SOUTHEAST
SUMMER CLASSIC
MURFREESBORO, TENNESSEE
JUNE 11-13**

Join Limousin juniors and enthusiasts from your area of the country in the special regional shows hosted by the Western Limousin Breeders, Heartland Limousin Association and Southeastern Limousin Breeders Association.

Juniors must pay their annual activity fees before they may participate in the NALJA regional and national shows.



HEARTLAND REGIONAL JUNIOR LIMOUSIN SHOW COUNCIL BLUFFS, IOWA • JUNE 4-5

LOCATION

Westfair Fairgrounds, Council Bluffs, Iowa

SCHEDULE OF EVENTS

Thursday, June 3

Cattle may begin arriving

Friday, June 4

11 a.m. – Cattle must be on the grounds

Noon – Cattle check-in, with junior meeting, activities and mixers to follow

6 p.m. – Dinner for juniors, their families and guests

Saturday, June 5

9 a.m. – Heartland Regional Junior Limousin Show

RULES

The Heartland Regional Junior Limousin Show will follow all the rules of the 2010 National Junior Limousin Show and

Congress, including those regarding fitting. The use of adhesives is optional. All cattle must have valid health papers and registration certificates at check-in.

ENTRIES

Entry fees are \$25 per head if entered by May 1. Entries received between May 1 and check-in will be \$30 per head. The entry fee includes a show shirt; indicate your size on your entry form. There will be a \$10 per head bedding fee, which includes chips for the stalls in the barn. Bring your own straw for the tie-outs.

Send entries to NALF, Attn: Kate Maher, 7383 S. Alton Way, Ste. 100, Centennial, CO 80112-2339.

MEALS, SNACKS

All meals will be provided Friday and Saturday, and there will be a hospitality area with snacks and beverages.

LODGING

Heartland Inn; 4 miles from fairgrounds; (712) 322-8400; \$65 per night, plus tax, includes breakfast and evening snacks; call by May 10 and ask for the HLA block

Settle Inn; (712) 366-5555; \$79 per night, plus tax; ask for V90000 when making reservations by May 10

Ameristar Casino Hampton Inn; (712) 328-2500

Comfort Suits; (712) 323-9760

ADDITIONAL INFORMATION

Dean Summerbell, (612) 963-3799 or bsummerb@ties2.net

EASTERN REGIONAL JUNIOR LIMOUSIN SHOW

MURFREESBORO, TENNESSEE • JUNE 11-13 • IN CONJUNCTION WITH THE SOUTHEAST SUMMER CLASSIC (SSC)

LOCATION

Tennessee Livestock Center,
Middle Tennessee State University,
Murfreesboro, Tenn.

SCHEDULE OF EVENTS

Thursday, June 10

Cattle may arrive on the grounds

Friday, June 11

8 a.m. – Cattle must be in place

9 a.m. – Check-in (junior cattle, then
open-show cattle), with junior
activities to follow

Saturday, June 12

9 a.m. – Eastern Regional Junior Limousin
Show: owned females; bred-and-
owned females and bulls; Lim-Flex®
females; Lim-Flex bred-and-owned
bulls; steers; senior, intermediate and
junior showmanship

Sunday, June 13

9 a.m. – Southeast Summer Classic Medal
of Excellence (MOE) Level 2 Show

RULES

The Eastern Regional Junior Limousin
Show will follow all the rules of the 2010
National Junior Limousin Show and
Congress (NJLSC). Showmanship age
breaks are junior (13 and younger),
intermediate (14–16) and senior (17–21).
Steer classes will be divided by weight.
Female and bull classes will be divided
by age.

Exhibitors must be members of the
North American Limousin Junior
Association (NALJA), own their cattle
and have the cattle in their names by
May 1.

ENTRIES

Entry fees for the junior show are \$25
per head, payable to the North
American Limousin Foundation (NALF).
All entries must be postmarked by May
1. Late entries will be \$30 per head and
will be accepted until check-in. Juniors
may double-enter in the junior and open
shows using the regional show entry
form. Entry fees for the open show are

\$25 per head for junior exhibitors. There
will be a \$10 per head bedding fee. **No
refunds.**

Send entries to NALF, Attn: Kate
Maher, 7383 S. Alton Way, Ste. 100,
Centennial, CO 80112-2339.

LODGING

Super 8; 127 Chaffin Place; (615) 867-
5000; \$65 per night, plus tax, for two
queen-sized beds; \$55 per night, plus
tax, for one king-sized bed
Holiday Inn Express; 2565 Highwood
Blvd., Smyrna; (615) 893-9992; \$90
per night, plus tax
Clarion Inn and Suites; 2227 Old Fort
Parkway; (615) 896-2420
Holiday Inn Express; 165 Chaffin Place;
(615) 849-9000
Red Roof Inn; (615) 893-0104

ADDITIONAL INFORMATION

Bruce Steelman, (615) 542-1364 or
triplecreeklm@yahoo.com
Hugh Montgomery, (270) 273-3246 or
quailridgehugh@yahoo.com

WESTERN REGIONAL JUNIOR LIMOUSIN SHOW

KALAMATH FALLS, OREGON • JUNE 17-19 • IN CONJUNCTION WITH THE WESTERN LIMOUSIN EXPOSITION (WLE)

LOCATION

Klamath County Fairgrounds and Event
Center, Klamath Falls, Ore.

SCHEDULE OF EVENTS

Thursday, June 17

4 p.m. – Cattle must be in place for
check-in

6 p.m. – Complimentary welcome
barbecue, Country Inn Limousin

Friday, June 18

9 a.m. – Junior events

Noon – Pizza lunch

2 p.m. – Junior show

6:30 p.m. – Social

7 p.m. – WLE banquet, junior award
presentations and benefit auction

Saturday, June 19

9 a.m. – WLE Medal of Excellence (MOE)
show

RULES

The Western Regional Junior Limousin
Show will follow all the rules of the 2010
National Junior Limousin Show and
Congress (NJLSC). Showmanship age
breaks are junior (13 and younger),
intermediate (14–16) and senior (17–21).
Steer classes will be divided by weight.
Female and bull classes will be divided
by age.

Exhibitors must be members of the
North American Limousin Junior
Association (NALJA), own their cattle and
have the cattle in their names by May 1.

ENTRIES

Entry fees for the junior show are \$20
per head, payable to the North
American Limousin Foundation (NALF).
All entries must be postmarked by May
1. Late entries will be \$40 per head and

will be accepted until check-in. Juniors
may double-enter in the junior and open
shows using the regional show entry
form. Entry fees for the open show are
\$25 per head for junior exhibitors. **No
refunds.**

Send entries to NALF, Attn: Kate
Maher, 7383 S. Alton Way, Ste. 100,
Centennial, CO 80112-2339.

LODGING

Days Inn, (541) 882-8864. Room rate: \$65
per night, plus tax. Reserve by May 15.
Ask for the “Western Limousin Expo”
block.

ADDITIONAL INFORMATION

Dave Berry, (360) 769-0639 or
westerntimber@earthlink.net

2010 LIMOUSIN REGIONAL JUNIOR SHOW ENTRY FORM

Send all entries to North American Limousin Foundation, Attn: Kate Maher, 7383 S. Alton Way, Suite 100, Centennial, CO 80112

Name _____ NALJA Member # _____
 Address _____ Age as of 1/1/2010 _____ Date of Birth _____
 City/State/ZIP _____ Phone _____
 Parent's Name _____ Adult Shirt Size S M L XL
 E-mail Address _____
 Hometown Newspaper — Name & E-mail Address: _____

Credit Card Payment

MasterCard VISA

Name on Card _____
 Card # _____ Exp. _____
 Signature _____

Heartland Regional Show
 June 4-5 – Council Bluffs, IA

Deadline: May 1, 2010
Entry Fee: \$25 per animal
Late entries: \$30 - accepted until check-in
Bedding Fee: \$10/head

Eastern Regional Show
 June 11-13 – Murfreesboro, TN

Deadline: May 1, 2010
Entry Fee: \$25 per animal
Late entries: \$30 - accepted until check-in
Bedding Fee: \$10/head

Enter all cattle in Southeast Summer Classic (additional \$25 per head)

Western Regional Show
 June 17-19 – Klamath Falls, OR

Deadline: May 1, 2010
Entry Fee: \$20 per animal
Late entries: \$40 - accepted until check-in

Enter all cattle in Western Limousin Exposition (additional \$25 per head)

STEER ENTRY FORM

Birthdate	% Limousin	Herd Prefix & Tattoo	Registration Number

Refer to Show Rules for animal qualifications. If you need more entry space, please make a copy of the entry form.

FEMALE/BULL ENTRY FORM

Birthdate	Sex	Herd Prefix & Tattoo (required)	Registration #	Animal's Name	Bred-&Owned

Refer to Show Rules for animal qualifications. (Note: Bulls **must** be bred-and-owned.) If you need more entry space, please make a copy of the entry form.

COW-CALF ENTRY FORM

Birthdate	Herd Prefix & Tattoo (required)	Registration #	Bred-&Owned
Cow			Cow Name: _____
Calf		Sex: _____	Sire Name: _____
Cow			Cow Name: _____
Calf		Sex: _____	Sire Name: _____

Refer to Show Rules for animal qualifications. If you need more entry space, please make a copy of the entry form.

LIM-FLEX FEMALE/BULL ENTRY FORM

Birthdate	Sex	Herd Prefix & Tattoo (required)	Registration #	Animal's Name	Bred-&Owned

Refer to Show Rules for animal qualifications. (Note: Bulls **must** be bred-and-owned.) If you need more entry space, please make a copy of the entry form.

I verify that I have read the rules and regulations related to participation and exhibition in the regional junior Limousin shows and agree to adhere to all rules and regulations accordingly. (Must be signed by both exhibitor and parent/advisor to validate entry.)

Exhibitor's Signature: _____

Date: _____

Parent's/Advisor's Signature: _____

North American Limousin Junior Association

7383 S. Alton Way, Suite 100

Centennial, CO 80112-2339

Check that list!

Before submitting entries

to the regional or national junior shows, ask yourself a few questions.

- Is your junior activity fee (NALJA dues) paid?
- Have you signed your entry form?
- Are all your entries, including steers, registered?
Are their tattoos correct and legible?
- If you are not a NALJA member already, is your membership application enclosed?
- Is a check or credit-card number included?
- Have you checked the import regulations*** for the host states and every state you will enter on your way there?

